



LAYTON CITY

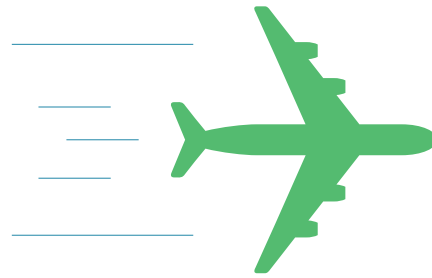
TRANSPORTATION 2021



TRANSPORTATION

Layton offers access to a quality network of roads, commuter rail, and air transportation, linking businesses to any major market. I-15, a major regional corridor, cuts directly through the heart of Layton, and sees nearly 250,000 individual car trips on a daily basis. Public transportation, trolleys, and commuter rail make Layton one of the most easily accessed cities on the Wasatch Front.

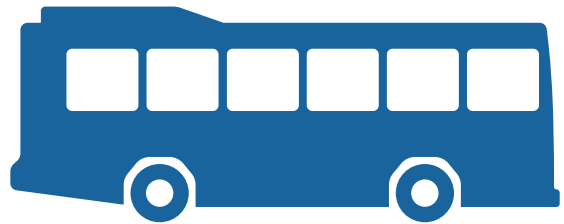
Salt Lake International airport is a short 25 minute drive away



PUBLIC



UTA FRONTRUNNER commuter rail connects the southern and northern parts of the Wasatch Front, and boasts nearly 22,000 daily passengers. Layton's historic Downtown Train Station services riders at 150 S. Main Street, in the heart of Downtown Layton.



UTA BUS ROUTES

455, 456, 470, 472
473, 477, 626, 627
628, 640, 664, 665

ADDITIONAL SERVICES INCLUDE a free midtown trolley that circumnavigates the downtown area, and ski bus services to Snowbasin Resort.

TRANSPORTATION



Midtown
Trolley



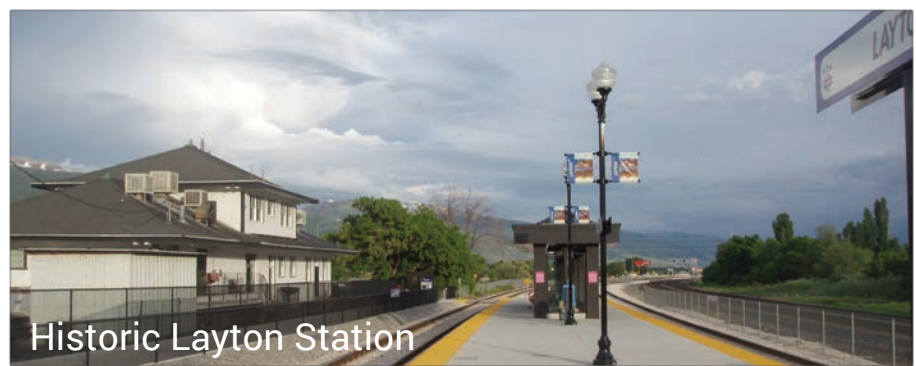
Midtown
Crossing



Snowbasin
Ski Bus



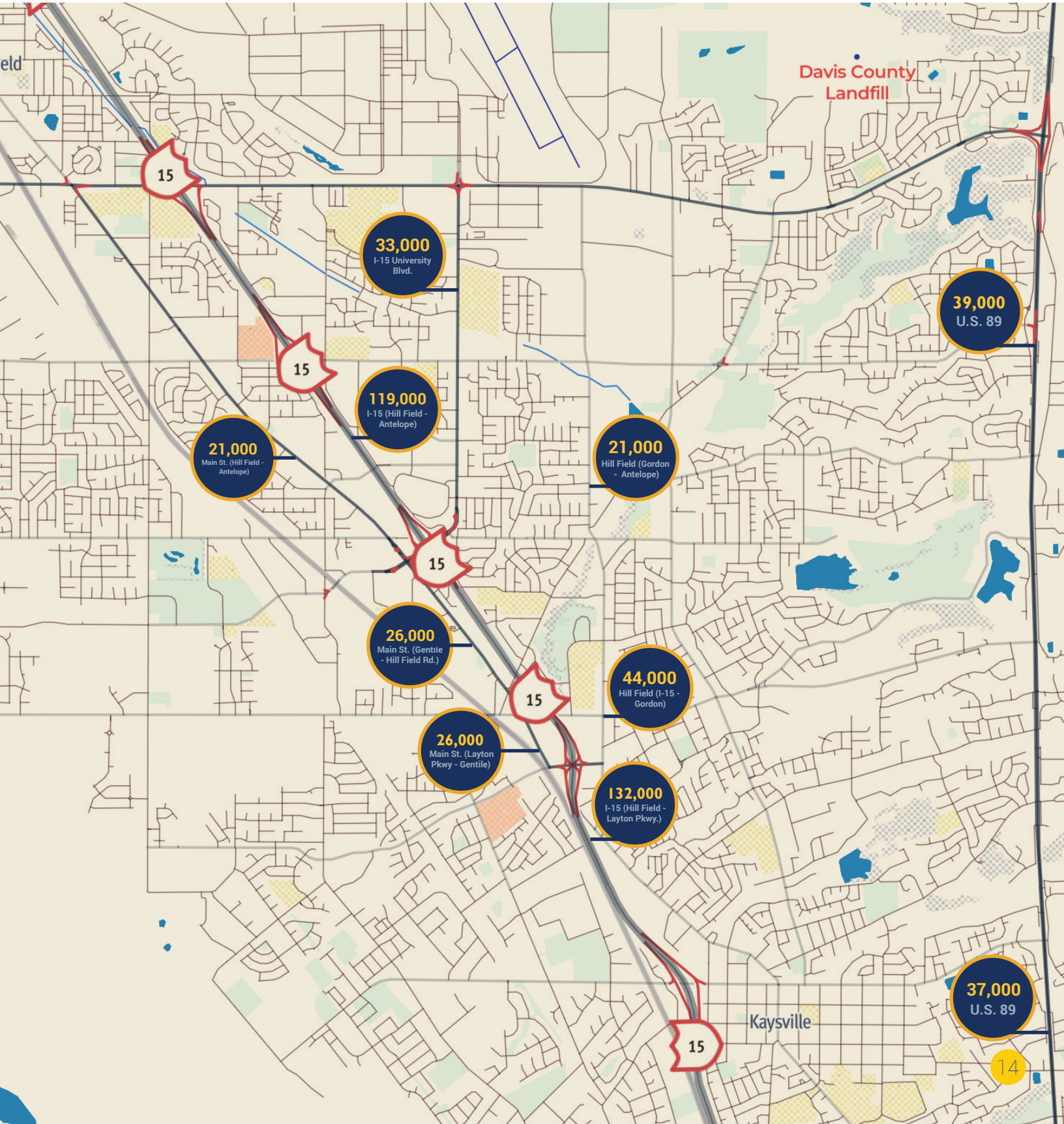
FRONT RUNNER Commuter Rail



Historic Layton Station

TRAFFIC COUNTS

..... AVERAGE ANNUAL DAILY TRIPS



CONTACT

LAYTON CITY

437 NORTH WASATCH DRIVE

LAYTON, UTAH, 84041

PHONE:.....801-336-3800

FAX:.....801-336-3789

WEB:.....www.laytoncity.org



JOY PETRO

Mayor,
Layton City
801-336-3800
jpetro@laytoncity.org



ALEX JENSEN

City Manager,
Layton City
801-336-3800
ajensen@laytoncity.org



CHAD WILKINSON

Director,
Community Development
801-336-3780
cwilkinson@laytoncity.org



LON CROWELL

Manager,
Economic Development
801-336-3790
lcrowell@laytoncity.org



STEVE JACKSON

City Engineer,
Layton City
801-336-3700
sjackson@laytoncity.org



PAUL BAUER

Building Official,
Layton City
801-336-3760
pbauer@laytoncity.org